



EPOXY ACRYLATE

DYNA-FIX® EPOXY ACRYLATE is a two-component chemical anchoring system which offers excellent adhesion to building material such as **concrete, masonry (solid and hollow), hard natural stone, solid rock, voided stone or rock etc.** It is used in rebar applications, starter bars, crash barriers, masonry support, safety railing and fencing etc...

With superior bond strength compared to its polyester based counterpart, this product is suitable for more demanding applications.

Approvals



Features

- Applied with standard caulking gun
- Economical injection system (reduced drilling diameter)
- Anchors may be placed close to free edges
- Applied in dry, wet or even flooded conditions with performance uncompromised.
- Variable embedment depths
- Ratio of 10:1



Loading & Curing Times

Substrate Temperature (° C)	Working Time (Mins)	Loading Time (Mins)
+5 to +10	12	120
+10 to +20	6	80
+20 to +25	4	40
+25 to +30	3	30
+30 to +35	2	20
+35 to +40	1.5	15
+40	1.5	10

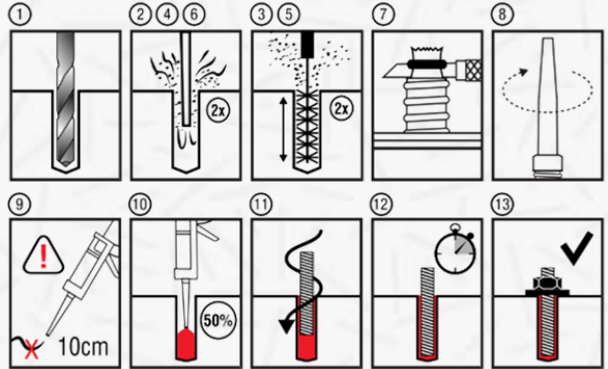
Physical Properties

Property		Unit	Value	Test Standard
Density		g/cm ³	1.7	ASTM D 1875 @ +20º C
Compressive Strength	4 hrs		60	BS6319
	24 hrs	N/mm ²	70	
	7 days		75	
Compressive E-Modulus	7 days	GN/m ²	3.13	ASTM D 695 M @ +20º C
Tensile Strength	24 hrs	N/mm ²	11	ASTM D 638 @ +20º C
	7 days		13	
Elongation at Break	24 hrs	%	0.09	ASTM D 638 @ +20º C
	7 days		0.12	
Flexural Strength	7 days	N/mm ²	24	ASTM D 790 @ +20º C



Designed & Manufactured According to AFAQ
ISO 9001:2015 Certified Quality Management System

Installation Instructions



Installation Parameters

*Design Load equals to Characteristic Load divided by a factor of 1.8

Anchor Size	Drill Hole Dia.	Embedment Depth (STD.)	Torque Moment	Characteristic Load*
M8	10 mm	80 mm	10 Nm	24 kN
M10	12 mm	90 mm	20 Nm	28 kN
M12	14 mm	110 mm	40 Nm	49 kN
M16	18 mm	128 mm	80 Nm	64 kN
M20	22 mm	170 mm	150 Nm	90 kN
M24	26 mm	210 mm	200 Nm	118 kN

Shelf Life

15 months from date of production, when stored at or below 25°C in the original unopened container

Packaging

- 300 mL cartridge

The information is offered in good faith and is believed to be accurate. It should not however be used in substitution for customer's tests to ensure that DYNA-FIX® products are safe, effective and compatible for the intended use. Sole warranty is that the product will meet the DYNA-FIX® sales specifications in effect at the time of delivery. Your exclusive remedy for breach of such warranty is limited to refund of purchase price or replacement of any product shown to be other than as warranted.