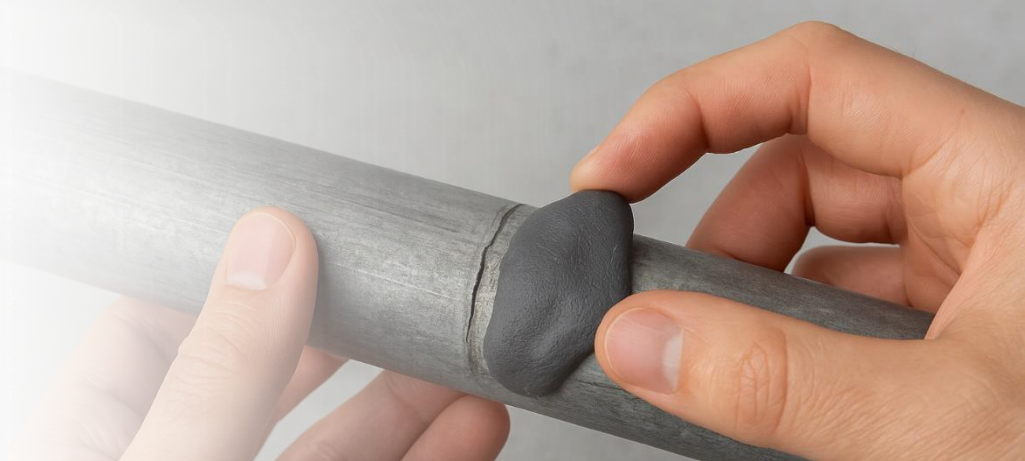


# QUICK FIX EPOXY PUTTY

TECHNICAL DATA SHEET  
Version 2.0 – Revised 2025



## Product Description

**DYNA-FIX® QUICK FIX EPOXY PUTTY** is a fast setting, hand mixed and moldable putty stick for quick and permanent repair with high strength and resilience. Its easy-to-shape consistency allows suitable handling before putty sets. Compatible with a variety of substrate including glass, ceramics, concrete, metals, wood and numerous plastics.

## Approvals



## Features

- Easy to use, hand-mixable
- Easy-to-shape consistency
- Unbreakable bond
- Water Resistant



**WATER  
RESISTANT**



**HAND  
MIXABLE**



**VERSATILE  
APPLICATION**



**UNBREAKABLE  
BOND**



QUICK FIX  
EPOXY PUTTY

TECHNICAL DATA SHEET  
Version 2.0 – Revised 2025



Packaging



60g  
Stick



10 units  
/ box

Technical Data

Property	Unit	Value
Work Life	Min	3 - 5
Lap Shear Strength on Concrete	MPa	6.2
Compressive Strength	MPa	55
Temperature Resistance	°C	120 Continuous 150 Discontinuous
Shore D Hardness		75
Chemical Resistance	Alcohols, Aqueous Salt Solutions, Dilute Acids & Bases, Ketones, Hydrocarbons	

Shelf Life



24  
Months

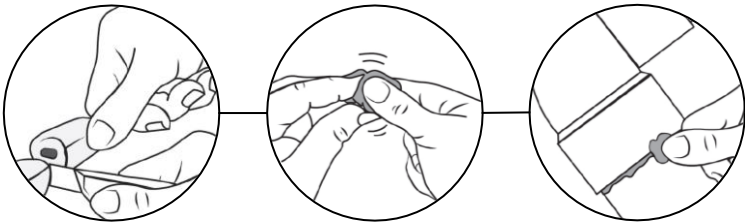


Proper  
Storage

+ 27°C  
+ 5°C

Instructions

1. Cut off required amount of DYNA-FIX® QUICK FIX EPOXY PUTTY and mix for at least one minute
2. Press the putty onto the surface and apply pressure for 15 minutes at least. Excess can be removed using a wet tool
3. Product will harden like metal after 3 to 5 minutes
4. Repaired water systems can be put back into service after 60 minutes. Full cure is achieved after 24 hours



The information in this document is based on Saber Industrial's technical and practical experience. It is provided for reference only and may not include all relevant details. Users must test product suitability for their intended application, surface, and conditions. Saber Industrial accepts no liability for misuse, improper application, storage, or transport. We reserve the right to change formulations without notice. Warranty is limited to conformance with current sales specifications. Liability is restricted to refund or replacement of non-conforming product.