



ACETOXY WEATHER SEALANT

Superior interior/exterior one-component weather silicone sealant with excellent adhesion to non-porous material such as glass, metals, aluminum, glazed ceramic tiles etc... Exceptional resistance to harsh weather conditions. Suitable for general sealing applications and waterproofing in cars, caravans, kitchens and bathrooms... Available in several standard colors and in custom colors. Short skinning and drying time.

Approvals

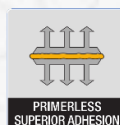
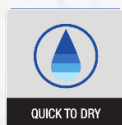
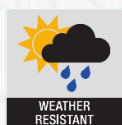


CE
SABER INDUSTRIAL CORPORATION, s.a.r.l., Industrial Zone, Jbeil, Lebanon 14 DoP DYNA-AX-01
EN 15651 – 1: F-EXT-INT EN 15651 – 3: S Class XS1



Features

- 100% silicone polymer
- Indoor & Outdoor Use
- Color customization – color matching
- Excellent UV, aging and weather resistance
- Excellent resistance to shrinkage, cracking, discoloring
- Solvent Free
- Short skinning and drying time

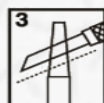
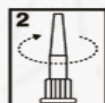


Surface Preparation

Surfaces must be clean, dry and free of grease, dust and frost. In case of renovation work, old sealant as well as old paint must be removed completely. Surface should be cleaned with a suitable solvent for the substrate such DYNA-PRO® Silicone Cleaner, isopropanol etc.

Instructions

This sealant is ready to use. After suitable joint preparation and masking, the sealant is gunned into place and tooled within 5 minutes, using a spatula which has been dipped in soapy water. Remove masking tape immediately after tooling. If necessary, clean uncured material using an approved sealant remover. For removal of cured material, abrasion or other mechanical means may be needed.



Designed & Manufactured According to AFAQ
ISO 9001:2015 Certified Quality Management System

Technical Data

Property	Unit	Value
Skin over time	Min	15
Extrusion rate 20°C 6.2Kg/cm2	g/min	223
Durometer Shore A, 3d/RT		24
Tensile 3d/RT	MPa	>= 1.55
Elongation 3d/RT	%	460

Priming

This product features adhesion to a variety of non-porous substrates; however, for specific substrates, priming may be necessary to improve adhesion. Please consult our Technical Service Department.

Shelf Life

14 months from date of production, when stored at or below 30°C in the original unopened container

Packaging

- 280 / 300 mL cartridge

Standard Colors



The information is offered in good faith and is believed to be accurate. It should not however be used in substitution for customer's tests to ensure that DYNA-PRO® products are safe, effective and compatible for the intended use. Sole warranty is that the product will meet the DYNA-PRO® sales specifications in effect at the time of delivery. Your exclusive remedy for breach of such warranty is limited to refund of purchase price or replacement of any product shown to be other than as warranted.