



## GP ACRYLIC SEALANT

**ELASTO® Acrylic** is a one-part acrylic sealant for interior sealant applications around windows and doors. Sealant is paintable, flexible and easy to apply. It exhibits good adhesion to building substrates including plaster, concrete, masonry, brickwork, anodized aluminum, gypsum, PVC and wood. It is not generally recommended to paint over elastic *expansion* joints.

### Approvals



<b>CE</b>
SABER INDUSTRIAL CORPORATION 14 DoP-ELASTO-AC-01
EN 15651 – 1: F-INT



## Features

- Movement accommodation up to 10%
- For Indoor Use
- Paintable 3 hours after application
- Aging Resistance
- Solvent Free (water-based)



## Surface Preparation

Surfaces must be clean, dry and free of grease, dust and frost. In case of renovation work, old sealant as well as old paint must be removed completely. It is recommended to apply a suitable back-up material (closed cell polyethylene backer rod or PE-foil) on the bottom of the joint to prevent the sticking of the sealant to the back of the joint.

## Instructions

Application of the sealant during extreme temperature variations should be avoided. Sealant joint width should be designed to accommodate movement capability of sealant. After suitable joint preparation and masking using ELASTO<sup>®</sup> general purpose masking tape, extrude the sealant and tool within 5 minutes, using a spatula dipped in soapy water. Remove masking tape immediately after tooling. If necessary, clean uncured material using an approved sealant remover or soapy water. For removal of cured sealant, abrasion or other mechanical means may be needed.



Designed & Manufactured According to AFAQ  
ISO 9001:2015 Certified Quality Management System

## Technical Data

Property	Unit	Value
Cure System		Acrylic Based
Hardness (Shore A)		30
Application Temperature	° C	+5 to +50
Temperature Resistance	° C	-25 to +80
Skin-over time	Min	10-20
Specific Gravity	g/cm <sup>3</sup>	(1.69±0.05)
Full Cure	cm	1-4
Movement Capability	%	10

## Priming

Porous substrates, e.g. concrete and untreated wood should be pre-treated with a diluted sealant (ELASTO<sup>®</sup> Acrylic with water in a ratio of 1:1 to 1:5). Before applying primer remove cement grouts, release agents and oil coatings.

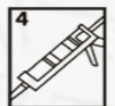
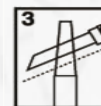
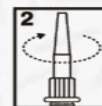
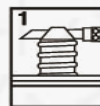
## Shelf Life

14 months from date of production, when stored at or below 25°C in the original unopened container

## Packaging

- 280 / 300 mL cartridge

## Standard Colors



*The information is offered in good faith and is believed to be accurate. It should not however be used in substitution for customer's tests to ensure that DYNA-PRO<sup>®</sup> products are safe, effective and compatible for the intended use. Sole warranty is that the product will meet the DYNA-PRO<sup>®</sup> sales specifications in effect at the time of delivery. Your exclusive remedy for breach of such warranty is limited to refund of purchase price or replacement of any product shown to be other than as warranted.*